

Micro⁺ Smokerlyzer[®]

One CO monitor for all your smoking cessation needs.



Infection control plays an important role in the medical device industry, but now more than ever, we must take extra precaution to ensure the safety of healthcare professionals and patients alike when performing CO breath tests to help people stop smoking.

This guide has been put together to help you safely resume CO monitoring.

Contents

How to perform a bump test with a non-smoker: 2

How to perform a bump test with verified gas: 3

How to perform a calibration: 4

How to perform a breath test: 5

How to perform a bump test with a non-smoker:

Prior to undertaking your first CO test, please check the Micro™ Smokerlyzer® is reading correctly by performing a Bump Test. This can be done by performing a breath test yourself or with a known non-smoker, or by using verified gas.

1



Press the breath test icon to begin

2



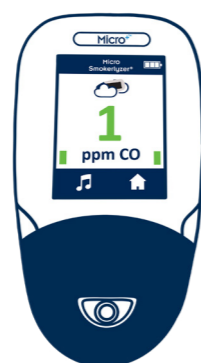
Follow the instructions on the Micro™ to complete a breath test

The practitioner will be prompted to inhale and hold their breath

There will be a 15 second countdown

The practitioner will be prompted to exhale slowly into the monitor, and should aim to completely empty their lungs

3

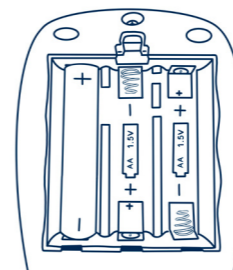


If the monitor is reading correctly, a non-smoker reading will be shown onscreen; this result should be green and under 6ppm. If the reading comes back a little high, it could be due to environmental CO; please verify the Smokerlyzer® with a second non-smoker.

If the reading is too high, you might need to calibrate your machine.

How to perform a bump test with verified gas:

1



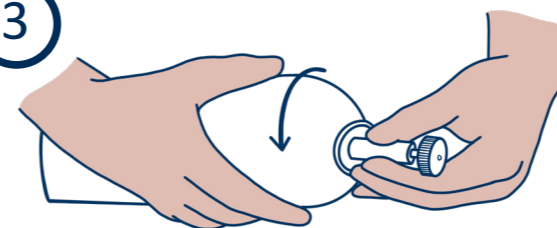
If it's been a while since you've used your Micro™, please check the batteries have charge. Replace them if necessary

2



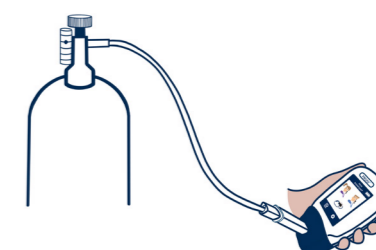
As routine maintenance, a bump test should always be performed after long periods of no use to check the device is reading correctly. You can perform a bump test using either a non-smoker or certified gas to ensure the device is reading correctly.

3



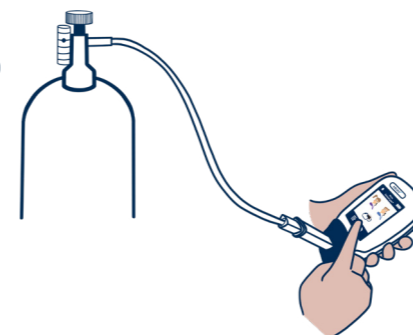
To perform a bump test using gas, firstly attach the gas canister to the gas regulator by screwing the canister into the regulator

4



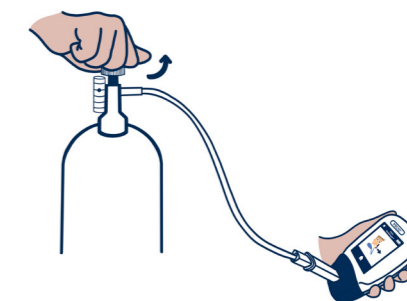
Attach the regulator to the Micro™ monitor

5



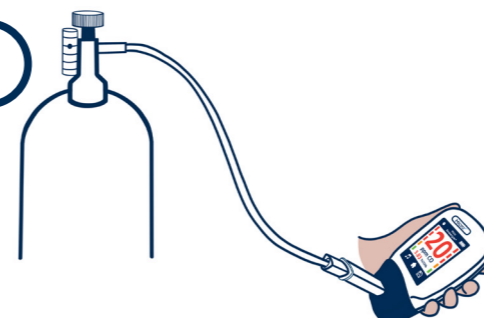
Start the breath test on the Micro™ monitor

6



Once the countdown has finished and the screen prompts to exhale, open the gas regulator to perform the bump test

7



Once the reading has stabilised on screen close the regulator to turn off the gas

9



Make sure the Micro™ monitor is reading between 15 and 22 ppm

9

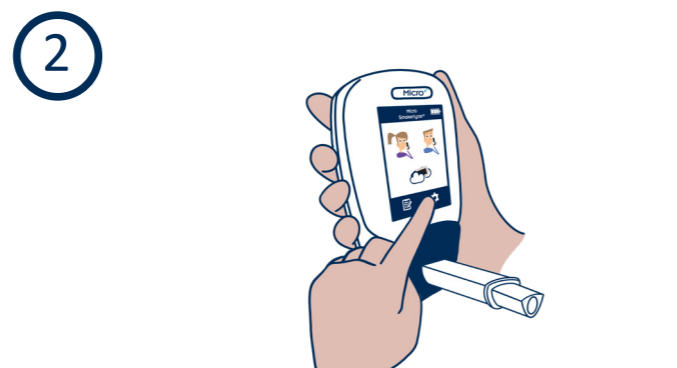


If the Micro™ is not reading between this range, please calibrate the monitor

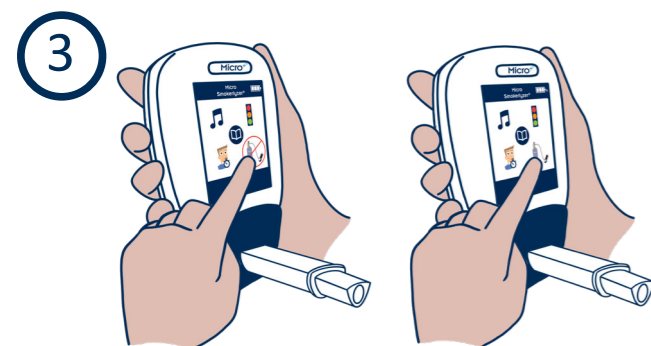
How to perform a calibration:



To perform a calibration test, firstly turn on the Micro+™ monitor



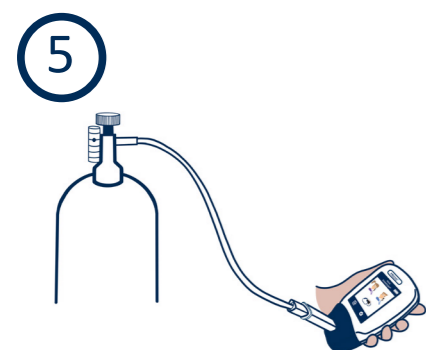
Press the settings icon to open the settings menu



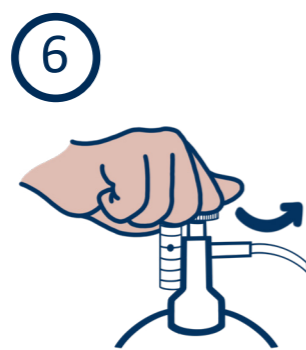
Press the calibration icon 5 times to unlock the option then press the icon once more to start the calibration



Allow the Micro+™ monitor to zero. If the monitor is too cold or hot please wait for it to come to ambient temperature before continuing



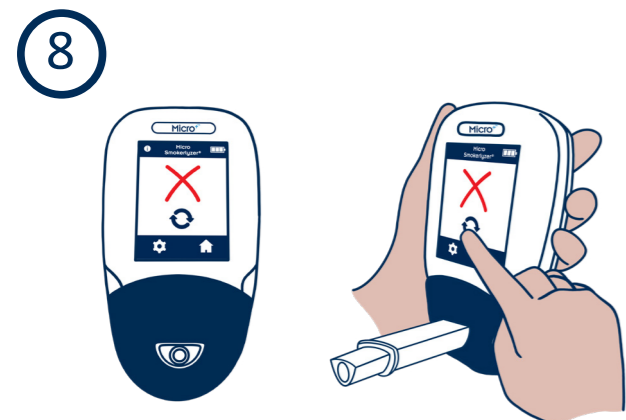
As prompted, attach the regulator to the Micro+™ monitor and follow the onscreen instructions to run the calibration



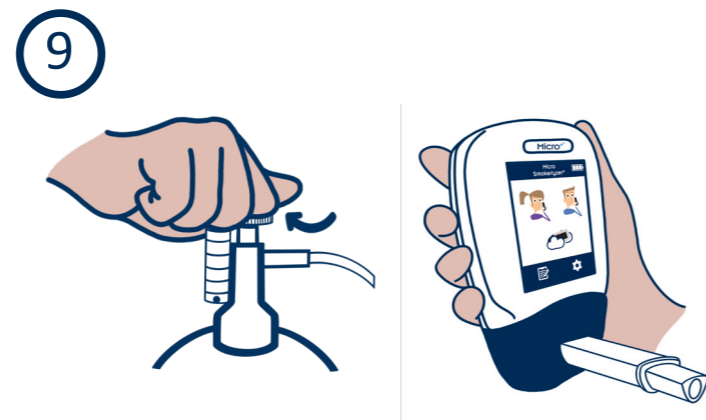
Open the gas regulator to perform the test



If the Micro+™ successfully completed its calibration a green tick will show.



If the the Micro+™ failed its calibration a red cross will show, press the retry icon to try again. If unsuccessful consult the troubleshooting section of the manual or contact your local distributor for help



Close the regulator when the calibration is finished

How to perform a breath test:

Bedfont® Scientific Ltd. has put together some advice on how to safely perform breath tests during the pandemic, however, first and foremost, it is recommended that you follow your local guidelines on breath testing procedures and necessary PPE



The Micro+™ should be wiped clean with the alcohol-free antibacterial wipes provided with the monitor before and after each test

The external surfaces of the D-piece™ filter should also be wiped down before and after each test

A new SteriBreath™ mouthpiece should be used for each patient. It is best practice for the patient to insert their own mouthpiece

D-piece™ should be replaced every 30 days



Follow the instructions on the Micro+™ to complete a breath test

The patient will be prompted to inhale and hold their breath

There will be a 15 second countdown

The patient will be prompted to exhale slowly into the monitor, and should aim to completely empty their lungs



The results will rise and stabilise onscreen

Allow the patient to throw away their used mouthpiece



Results can be interpreted using the Smokerlyzer® CO Chart

The external surfaces of the D-piece™ filter should also be wiped down before and after each test
D-piece™ should be replaced every 30 days

The Micro+™ should be wiped clean with the alcohol-free antibacterial wipes provided with the monitor before and after each test

Bedfont® Scientific Ltd
Station Road, Harrietsham, Maidstone, Kent,
ME17 1JA, England
Tel: +44 (0)1622 851122, Fax: +44 (0)1622 854860
Email: ask@bedfont.com, Web: www.bedfont.com

EC REP

Bedfont® GmbH
Mitterbachweg 18, 5081, Anif, Austria
Tel: +43 662 635050 Fax: +43 662 635050-50
Email: bedfont-gmbh@bedfont.com

Issue 2 - February 2021, Part No: MKT529
Bedfont® Scientific Limited reserve the right to change or update this literature without prior notice. Registered in: England and Wales. Registered No: 1289798

CE 2797

bedfont
est. 1976

bsi
ISO 13485:2016
Medical Device
Quality
Management
MD 502905